



jordan fishwick

4 The Carriages, Station Road, SK9 3BA
PCM £1,995 PCM



The Carriages Handforth SK9 3BA

£1,995 PCM



AVAILABLE NOW FURNISHED - FORMER SHOW HOME

This unique collection of 4 bedroom townhouses were all built to traditionally high standards and with a superior specification throughout.

Being only a stones throw from Handforth village and the train station, this spacious townhouse boasts a light and airy interior and is presented in immaculate condition and is sure to appeal.

Entrance hall with storage and access to garage with electric door and electric car charging point, downstairs WC, open plan fully fitted kitchen dining family room with appliances and bi fold doors to well maintained fully enclosed rear garden. To the first floor lounge with juliette balconies, master bedroom with fitted wardrobes and en-suite bathroom. To the second floor three further good sized bedrooms - two with fitted wardrobes and family bathroom with shower over bath.

Off road parking Garage VIEWING ESSENTIAL TO APPRECIATE !!

Contact Wilmslow 01625 536300 £1995.00pcm

EPC B


COUNCIL TAX E





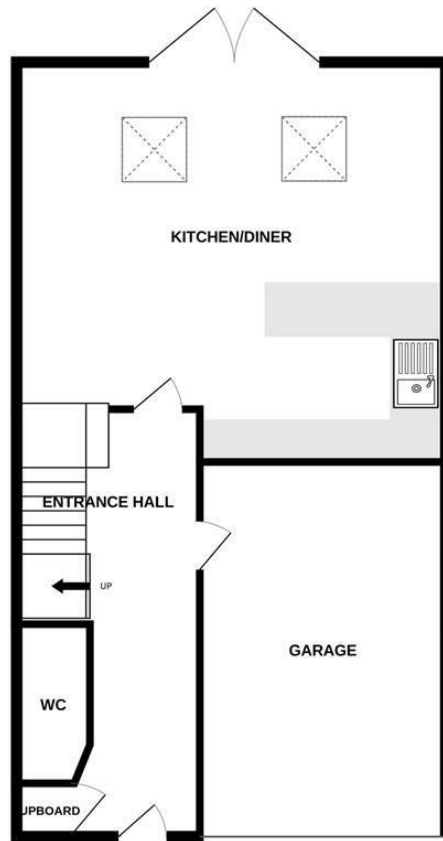
- FORMER SHOW HOME
- CENTRAL LOCATION
- CLOSE TO TRAIN STATION
- FOUR BEDS
- GARAGE
- IMMACULATE THROUGHOUT
- COUNCIL TAX E



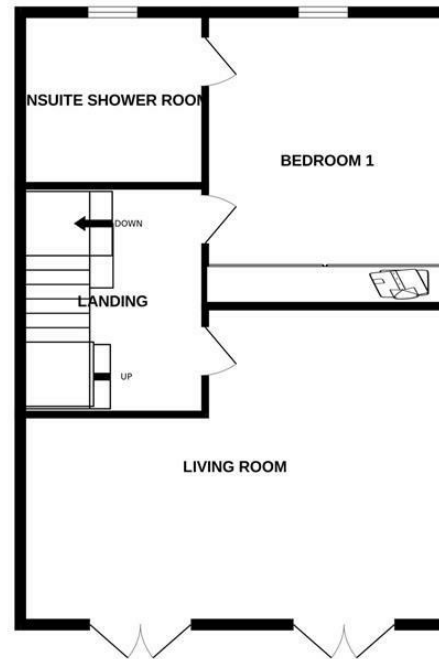
Energy Efficiency Rating		
	Current	Potential
Very energy efficient - lower running costs		
(92 plus) A		96
(81-91) B	87	
(69-80) C		
(55-68) D		
(39-54) E		
(21-38) F		
(1-20) G		
Not energy efficient - higher running costs		
England & Wales		EU Directive 2002/91/EC 



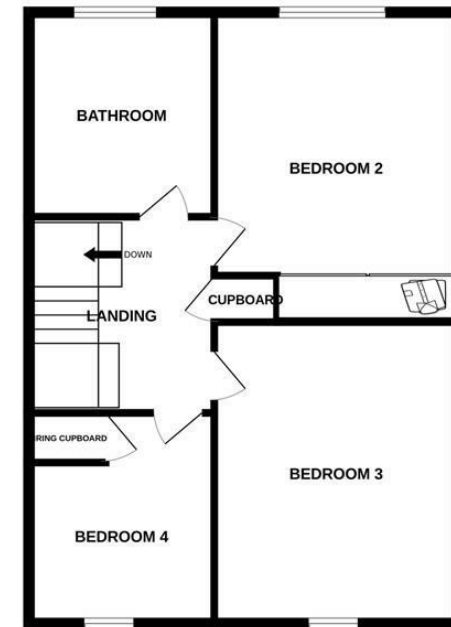
GROUND FLOOR



1ST FLOOR



2ND FLOOR



Measurements are approximate. Not to scale. Illustrative purposes only
Made with Metropix ©2024



These particulars are believed to be accurate but they are not guaranteed and do not form a contract. Neither Jordan Fishwick nor the vendor or lessor accept any responsibility in respect of these particulars, which are not intended to be statements or representations of fact and any intending purchaser or lessee must satisfy himself by inspection or otherwise as to the correctness of each of the statements contained in these particulars. Any floorplans on this brochure are for illustrative purposes only and are not necessarily to scale.

Offices at: Chorlton, Didsbury, Disley, Hale, Glossop, Macclesfield, Manchester Deansgate, Manchester Whitworth Street, New Mills, Sale, Wilmslow and Withington

01625 536300

wilmslow@jordanfishwick.co.uk
www.jordanfishwick.co.uk